

ROH

PORTFOLIO

KEI IMAZU



ROH

## BIOGRAPHY

Born 1980, Yamaguchi, Japan

Lives and works in Bandung, Indonesia

Kei Imazu utilizes everyday contemporary internet environment in collecting all sorts of artworks and objects that exist in and beyond the form of an image. After thoroughly going through her great volume of collected data, she distorts, reconstructs, and sketches them digitally. With the sketch she has created, Imazu traces it onto the canvas using oil paint, a method she currently employs to create her artworks.

Imazu has several solo exhibitions including *Sowed Them to the Earth* at Jessica Silverman Gallery, San Francisco, USA (2023); *Mapping the Land/Body/Stories of its Past* (2021) at ANOMALY, Tokyo, Japan; *Anda disini / You are here* (2019), Museum Haus Kasuya, Kanagawa, Japan; *Measuring Invisible Distance* (2018), Yamamoto Gendai, Tokyo, Japan; and *Overgrown* (2018), ROH Projects, Jakarta, Indonesia. Her group exhibitions include *Frieze Seoul* (2022), COEX Mall, Seoul, South Korea; *WAGIWAGI* at documenta fifteen (2022), Hübner areal, Kassel, Germany; *Declaring Distance: Bandung — Leiden* (2022), Selasar Sunaryo Art Space, Bandung, Indonesia; *AAAAHHH!!! Paris Internationale* (2018), Paris, France, all featuring her collaborative work with Bagus Pandega; *1*, ROH, Jakarta, Indonesia (2022); *We Paint!*, Palais de Beaux-Arts, Paris, France (2022), *Last Words*, ROH, Jakarta, Indonesia (2021); *We Are Here*, Jessica Silverman Gallery, San Francisco, USA (2021); *Tiger Orchid*, Art Basel OVR: Miami Beach, ROH Projects (2020); *Roppongi Crossing: Connexion*, Mori Art Museum, Tokyo, Japan (2019); *Meet the Collection - 30th Anniversary of the Yokohama Museum of Art*, Yokohama Museum of Art, Kanagawa, Japan (2019), *Tand aming Y/Our Passion*, Aichi Triennale, Nagoya, Japan (2019); Kei Imazu is the finalist of Prix Jean-François Prat in 2020.

ROH

CURRICULUM VITAE

EDUCATION

- 2015 MA Fine Art, Tama Art University, Department of Painting, Tokyo, Japan  
2007 BA Fine Art, Tama Art University, Department of Painting, Tokyo, Japan

SELECTED SOLO EXHIBITIONS

- 2023 *Sowed Them to the Earth*. Jessica Silverman Gallery, San Francisco, USA  
2021 *Mapping the Land/Body/Stories of its Past*. ANOMALY, Tokyo, Japan  
2019 *Anda disini / You are here*. Museum Haus Kasuya, Kanagawa, Japan  
2018 *Measuring Invisible Distances*. YAMAMOTO GENDAI, Tokyo, Japan  
2017 *Overgrown*. ROH Projects, Jakarta, Indonesia  
2016 *Repatriation*. YAMAMOTO GENDAI, Tokyo, Japan  
2015 *Broken Image*. YAMAMOTO GENDAI, Tokyo Japan  
2013 *Puzzle*. YAMAMOTO GENDAI, Tokyo Japan  
2010 *Flash*. YAMAMOTO GENDAI, Tokyo Japan  
2008 Kei Imazu Solo Exhibition. NICHE Gallery, Nagoya, Japan  
2006 Kei Imazu Solo Exhibition. Gallery b., Tokyo, Japan

SELECTED GROUP EXHIBITIONS

- 2023 Frieze Seoul 2023. ROH, COEX, Seoul, South Korea  
*Alternative Sea for Asia*. Jeonnam Museum of Art, Jeollanam-do, South Korea  
*Kiwari*. Tumurun Museum, Surakarta, Indonesia  
Art Basel Hong Kong 2023: Galleries, ROH, Hong Kong  
2022 ASIA NOW, *WAGIWAGI* by SUAVEART, Monnaie de Paris, Paris, France  
Art Collaboration Kyoto. Gallery Collaborations, Kyoto International Conference Center, Japan  
Art Basel Miami Beach 2022. Miami Beach Convention Center, Florida, USA  
Frieze Seoul 2022, ROH, COEX Mall, Seoul, South Korea  
*WAGIWAGI*, documenta fifteen. Hübner areal, Kassel, Germany

ROH

- Declaring Distance Bandung - Leiden*. Selasar Sunaryo Art Space, Bandung, Indonesia  
1. ROH, Jakarta, Indonesia
- 2021 *We Paint!*. Palais de Beaux-Arts, Paris, France  
*Last Words*. ROH, Jakarta, Indonesia
- 2020 *We Are Here*. Jessica Silverman Gallery, San Francisco, USA  
*Tiger Orchid*. Art Basel OVR: Miami Beach, ROH, Online  
Prix Jean-François Prat. Paris, France  
*RELAY TO TOKYO - Inheriting and Gathering*, The Byzantine and Christian Museum, Athens, Greece  
— *INSIDE THE COLLECTOR'S VAULT, VOL.1* —, WHAT Museum, Tokyo, Japan
- 2019 *Aichi Triennale 2019: Taming Y/Our Passion*, Nagoya City Museum, Aichi, Japan  
*Meet the Collection - 30th Anniversary of the Yokohama Museum of Art*. Yokohama Museum of Art, Kanagawa, Japan  
*Roppongi Crossing: Connexions*. Mori Art Museum, Tokyo, Japan
- 2018 *Contemporary Art of The 21st Century - Exhibition of Taguchi Art Collection*, Hiratsuka Museum of Art, Kanagawa, Japan
- 2017 *In Focus: Japanese Contemporary Art*, Minneapolis Institute of Art, Minnesota, USA  
*Spring Fever*. Komagome SOKO, Tokyo Japan  
*#10, Object Manipulation, Statements*, Tokyo, Japan  
*Perspectives*. Intermediateque (IMT), Tokyo, Japan  
*Sylvanian Families Biennale*. XYZ Collective, Tokyo, Japan
- 2016 *Mindfulness! Takahashi Collection 2016*, The Museum of Art, Kochi; Kochi, Japan  
*Welcome to the A W E S O M E M A N S I O N*. YAMAMOTO GENDAI, Tokyo, Japan  
*Intimate Curiosity —Invitation to Japanese Collectors of Contemporary Art*. Hong Kong Arts Centre, Hong Kong
- 2015 *execution*. YAMAMOTO GENDAI, Tokyo, Japan  
Prudential Eye Zone. ArtScience Museum, Singapore  
*Taguchi Hiroshi Art Collection: A Walk around the Contemporary Art World after Paradigm Shift*. The Museum of Fine Arts, Gifu, Japan
- 2014 *Kichijoji no Nichiyoubi (KADAI) by Hiroyuki Oki*, Art Center Ongoing, Tokyo, Japan  
*Taguchi Art Collection: TAG-TEN*. Matsumono City Museum of Art, Nagano, Japan
- 2013 *flowers80.1*. TRAUMARIS, Tokyo, Japan
- 2012 *Blind Sight*. MA2 Gallery, Tokyo, Japan  
*Painting Never Dies*. YUKA TSURUNO Gallery, Tokyo, Japan
- 2011 *Girlfriends Forever!*. Tokyo Wonder Site Hongo, Tokyo, Japan  
*Culture*. Art Center Ongoing, Tokyo, Japan
- 2010 *JAPANESE COLORS*. Gallery IHN, Seoul, South Korea
- 2009 *VOCA 2009*. The Ueno Royal Museum, Tokyo, Japan

## ROH

- 2007 *Women Without Boundaries*. Art Labor Gallery, Shanghai, China
- 2007 *Niche Young Artist Show*. NICHE Gallery, Tokyo, Japan
- 2006 *The Third Reunited Exhibition*. Yokohama Citizen Gallery, Azamino, Japan
- 2006 *Hyakka-Ryouran (Blossoms in gay profusion)*. BOICE PLANNING, Kanagawa, Japan
- 2005 *Yanaka-Biyori (Good day in Yanaka City)*, Gallery J2, Tokyo, Japan

## AWARDS

- 2020 Finalist, Prix Jean-Francois Prat 2020
- 2013 Encouragement Award, The 5th Kinutani Koji Award, The Mainichi Newspapers
- 2009 Prize for Excellence, VOCA 2009, The Ueno Royal Museum
- 2006 Accepted at Shell Art Award Exhibition
- 2004 Accepted at Tokyo Wonderwall Exhibition

ROH

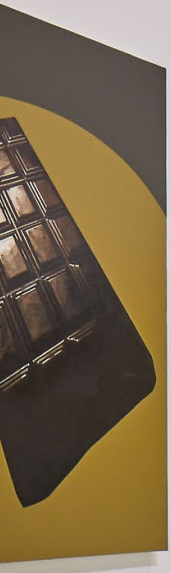
FRIEZE SEOUL 2023

AGUS SUWAGE  
DAVY LINGGAR  
DONGHO KANG  
EIMEI KANEYAMA  
HYUN NAHM  
KEI IMAZU  
KYOUNGTAE KIM  
TROMARAMA

6 - 9 SEPTEMBER 2023

COEX MALL  
513 YEONGDONG-DAERO  
GANGNAM-GU, SEOUL

IMAGE COURTESY OF WHISTLE AND ROH  
PHOTOGRAPH BY ROHSPACE



ROH

KEI IMAZU

*Susu*  
2023  
Oil on linen  
60 × 80 cm





ROH

KEI IMAZU

*Anatomy of A Flower*  
2023

Galvanized Iron, fabric, polyurethane paint  
90 × 80 cm



ROH

SOWED THEM TO THE EARTH

27 JULY - 9 SEPTEMBER 2023

JESSICA SILVERMAN GALLERY  
621 GRANT AVE  
SAN FRANCISCO, USA

PHOTOS COURTESY OF



ROH

KEI IMAZU

*Blossoming Organs*  
2023  
Oil on linen  
200 × 350 × 4 cm



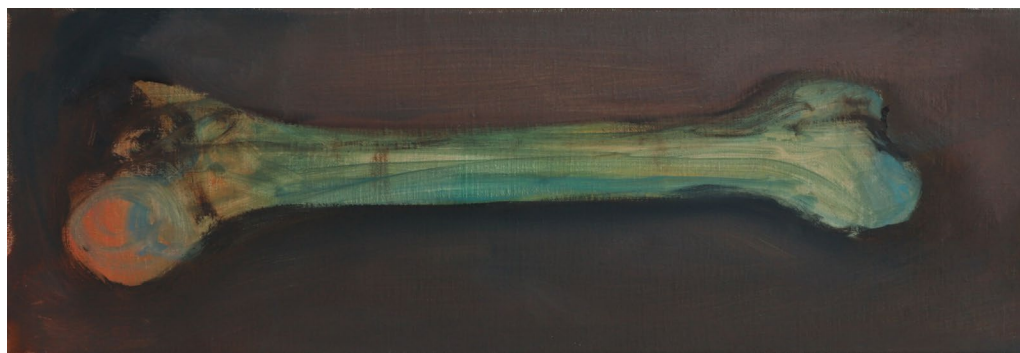
ROH

KEI IMAZU

*Aroma Map*  
2023  
Oil on linen  
48 × 150 × 4 cm



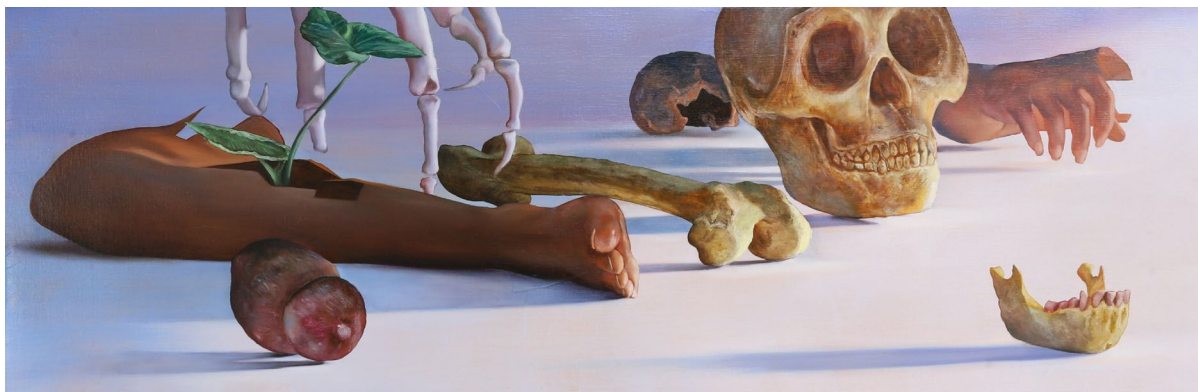
*Femur*  
2023  
Oil on linen  
20 × 60 × 1.8 cm



ROH

KEI IMAZU

*Objects at Rest*  
2023  
Oil on linen  
48 × 150 × 4 cm



*Curves of Time*  
2023  
Oil on linen  
60 × 80 × 1.8 cm



ROH

KEI IMAZU

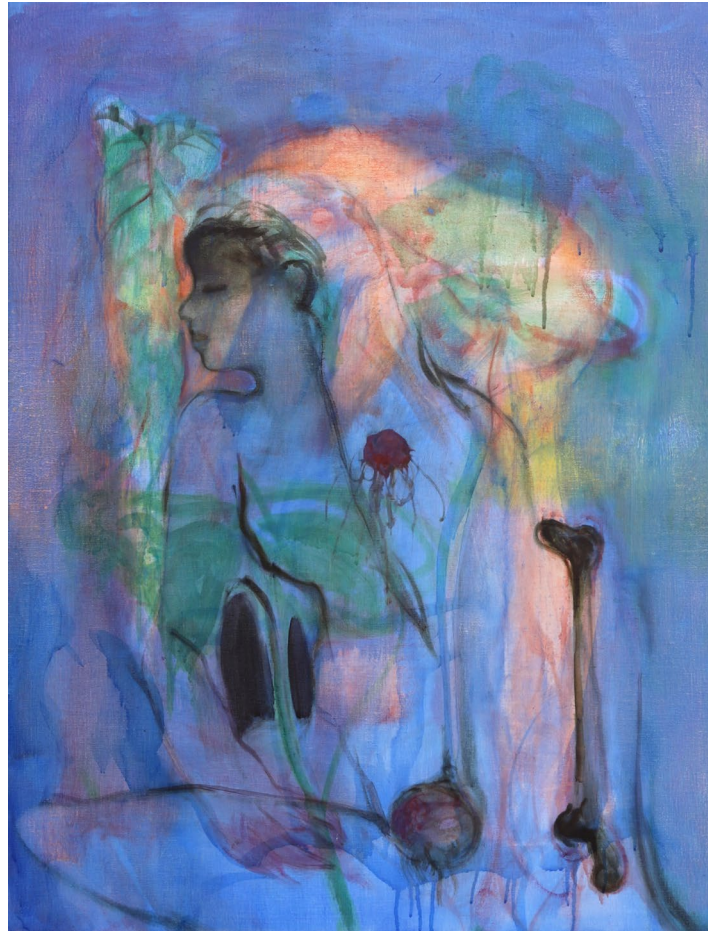
*Green Veins / Falling Goddess*  
2023  
Oil on linen  
150 × 150 × 4 cm



ROH

KEI IMAZU

*Hainuwele in Cerulean Blue*  
2023  
Oil on linen  
80 × 60 × 1.8 cm







*Harvested Body*  
2023  
Automotive paint on galvanized steel wire  
74 × 70 × 1 cm



*Warm Viscera*  
2023  
Automotive paint on galvanized steel wire  
57 × 82 × 1 cm

ROH

KEI IMAZU

*Shadows in the Footsteps of Ancestors*  
2023  
Oil on linen  
100 × 120 × 2.5 cm



ROH

KEI IMAZU

*Strata*  
2023  
Oil on linen  
80 × 60 × 1.8 cm

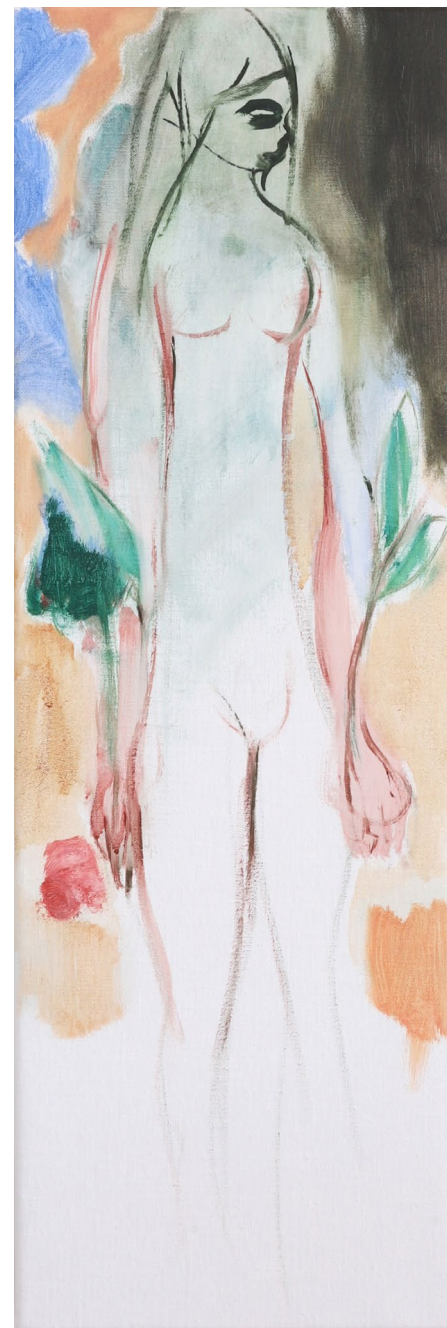
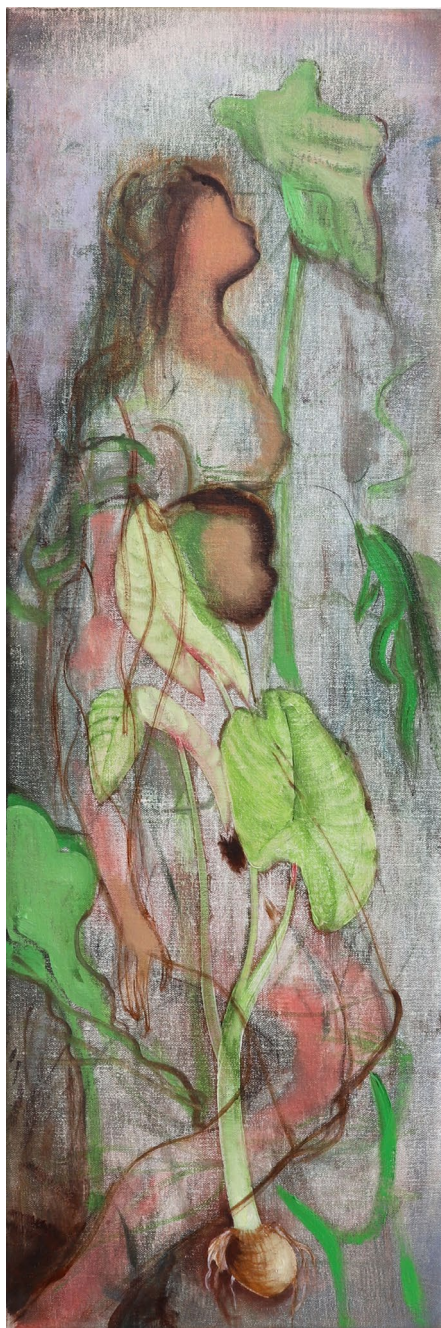


ROH

KEI IMAZU

*Talas and Goddess*  
2023  
Oil on linen  
60 × 20 × 1.8 cm

*Sprouting from My Hands*  
2023  
Oil on linen  
60 × 20 × 1.8 cm



ROH

ALTERNATIVE SEA FOR ASIA

KANG HONGGOO  
KIM SEUNGYOUNG  
KIM CHEONIL  
KIM WHANKI  
NAKAMURA KAZUMI  
LEE YIHHONG  
MURAI HIRONORI  
PAIK NAMJUNE  
OH JIHO  
UCHIDA AGURI  
YUAN HUILI  
KEI IMAZU  
CHEN YUJUNG  
HEO GEON  
HEO BAEKRYUN  
HUANG BOHAO

11 APRIL - 15 JULI 2023

JEONNAM MUSEUM OF ART  
660 SUNGWANG-RO, GWANGYANG-SI  
JEOLLANAM-DO  
SOUTH KOREA

PHOTOS COURTESY OF JEONNAM MUSEUM OF ART



ROH

KEI IMAZU

*Survival*  
2019  
Oil on canvas, Digital print on vinyl  
292 × 388 cm (canvas), 1,100 × 295 cm (2 sheets)  
Collection of Ueshima Collection



ROH

KIWARI

ARAHMAIANI  
CHRISTINE AY TJOE  
DOLOROSA SINAGA  
EMIRIA SOENASSA  
ETZA MEISYARA  
I GAK MURNIASIH  
INDIEGUERILLAS  
KEI IMAZU  
MELATI SURYODARMO  
MELLA JAARSMA  
NADIAH BAMADHAJ  
RITA WIDAGDO  
SINTA TANTRA  
SYAGINI RATNA WULAN  
TROMARAMA  
WINDI APRIANI

21 MEI - 21 NOVEMBER 2023

TUMURUN MUSEUM  
JL. KEBANGKITAN NASIONAL NO.2, RW.4, SRIWEDARI  
SURAKARTA, JAWA TENGAH

PHOTOS COURTESY OF TUMURUN MUSEUM AND  
THE ARTIST





ROH

KEI IMAZU

*Endosymbiosis*  
2022  
Oil on linen  
200 × 300 cm



ROH

ART BASEL HONG KONG 2023

ADITYA NOVALI  
AGUNG KURNIAWAN  
ARIN DWIHARTANTO SUNARYO  
BAGUS PANDEGA  
DAVY LINGGAR  
KEI IMAZU  
MARUTO  
MELLA JAARSMA  
NADYA JIWA  
SYAGINI RATNA WULAN  
SYAIFUL AULIA GARIBALDI  
TROMARAMA

21 – 25 MARCH 2023

ROH  
HONG KONG CONVENTION AND EXHIBITION CENTRE  
1 EXPO DR, WAN CHAI  
HONG KONG

PHOTOS COURTESY OF THE ARTISTS AND ROH

3C06  
ROH Projects  
Warta

Encounters

Mella Jaarsma  
Kris

Film

Rizal Rizaldi,  
Tromarama



3C0  
ROH Proj  
Kabin  
Agus Sowa

ROH

KEI IMAZU

*Harvesting from the Buried Goddess Body*  
2023  
Oil on linen  
250 × 202 cm



ART COLLABORATION KYOTO

KEI IMAZU  
NADYA JIWA  
TROMARAMA

18 - 20 NOVEMBER 2022

ROH X ANOMALY, GALLERY COLLABORATIONS  
KYOTO INTERNATIONAL CONFERENCE CENTER, JAPAN

PHOTOS COURTESY OF THE ARTISTS



ROH

KEI IMAZU

*Curiosity Cabinet from Ambon*  
2022  
Oil on linen  
194 × 194 cm





ROH

KEI IMAZU

*Drowsiness*  
2022  
Oil on linen  
194 × 162 cm



ROH

KEI IMAZU

*Nautilus Goblet*  
2022  
Oil on linen  
40 × 60



ART BASEL MIAMI BEACH

KEI IMAZU

1 - 3 DECEMBER 2022

MIAMI BEACH CONVENTION CENTER

PHOTOS COURTESY OF SHAUN ROBERTS

ROH

KEI IMAZU

*Mermaids*  
2022  
Oil on linen  
194 × 194 cm



ROH

KEI IMAZU

*Little Fish and Big Flower*  
2022  
Oil on linen  
100 × 80 cm



FRIEZE SEOUL 2022

BAGUS PANDEGA  
KEI IMAZU

2 - 5 SEPTEMBER 2022

ROH  
COEX MALL  
SEOUL, SOUTH KOREA

PHOTOS COURTESY OF THE ARTISTS AND ROH

Bagus Pandega (b. 1985, Jakarta, Indonesia) and Kei Imazu (b.1980, Yamaguchi, Japan) focus respectively on kinetic multimedia installations and painting respectively, and they reside in Bandung, Indonesia. Despite building further upon their own distinctive aesthetic languages, the two artists have been building a body of collaborative work as well that delves into the relationships between ecological and sociopolitical histories of their surrounding environments. In the case of their presentation at Frieze Seoul, they draw reference from the local colloquialism *Tanah Air*, literally translated as “land and water”, but metaphorically as the entire archipelago of Indonesia.

This new body of work is based on research upon the Lusi Isle on the coast of Sidoarjo, East Java. The name Lusi is a portmanteau for *Lumpur Sidoarjo* (Sidoarjo Mud), a 94-hectare island that was formed due to the largest recorded mud volcano spillage in recorded history. In 2006, the first hot mud eruption occurred from a natural gas well at Sidoarjo Regency, East Java, which has not ceased until now and has been declared a national disaster. The mud has since then continued flowing into the Porong River, resulting in the shallowing of the riverbed and has gradually formed the Lusi isle. The eruption has displaced thousands of people in the surrounding villages and communities, as well as causing billions of dollars worth of damage to infrastructure, property, and ecology. The mineral content of both water currents and soil topographies surrounding the site have been altered in an intractable manner.

In a series of interviews with a local shrimp farmer, they discovered that local aquaculture farmers have found means to recover their livelihoods through innovations in ecological harvesting strategies by planting mangrove plantations in select locations to filter the water from the mineral impurities and sediment caused by the Lusi disaster. The mangrove plantations have also allowed for the possibilities of a new ecosystem involving mangrove crabs, fin fish, and clams. Whenever the water becomes overflowed by the mud once again, the crabs and other lifeforms begin to die and float around the mangrove roots, signaling the farmers to fix the possibly broken embankment. The clams also act as biological water indicators and are also cultivated to filter and absorb hazardous materials from the water. The development of these strategies, alongside other ingenious responses, are made possible and have been kept intact by the local communities of aquaculture farmers, all working collaboratively to help each other adapt and survive.

Based on their observations, Imazu has developed a new body of work consisting of *When Facing the Mud (Response of Shrimp Farmers in Sidoarjo)* (2022), an expansive diptych depicting an aerial view of Lusi and its mudflow towards the ocean, as well as the geographical locations of mines and strata of soil that depict layers of time in its topography. Imazu's painting places in juxtaposition with each other a map of the Porong Regency with scenes from a shrimp farmer's personal narrative and biological cycles putting in picture the silvofishery system. To further illustrate life after the disaster, Imazu shows *When Facing the Mud (Putra)* (2022), a two-channel video projection on a pair of silkscreen that presents their conversations with a local shrimp farmer. Imazu has also developed a number of intimately scaled paintings to further express more quotidian textures pertaining to the interviewed farmer and his daily cycle of life.

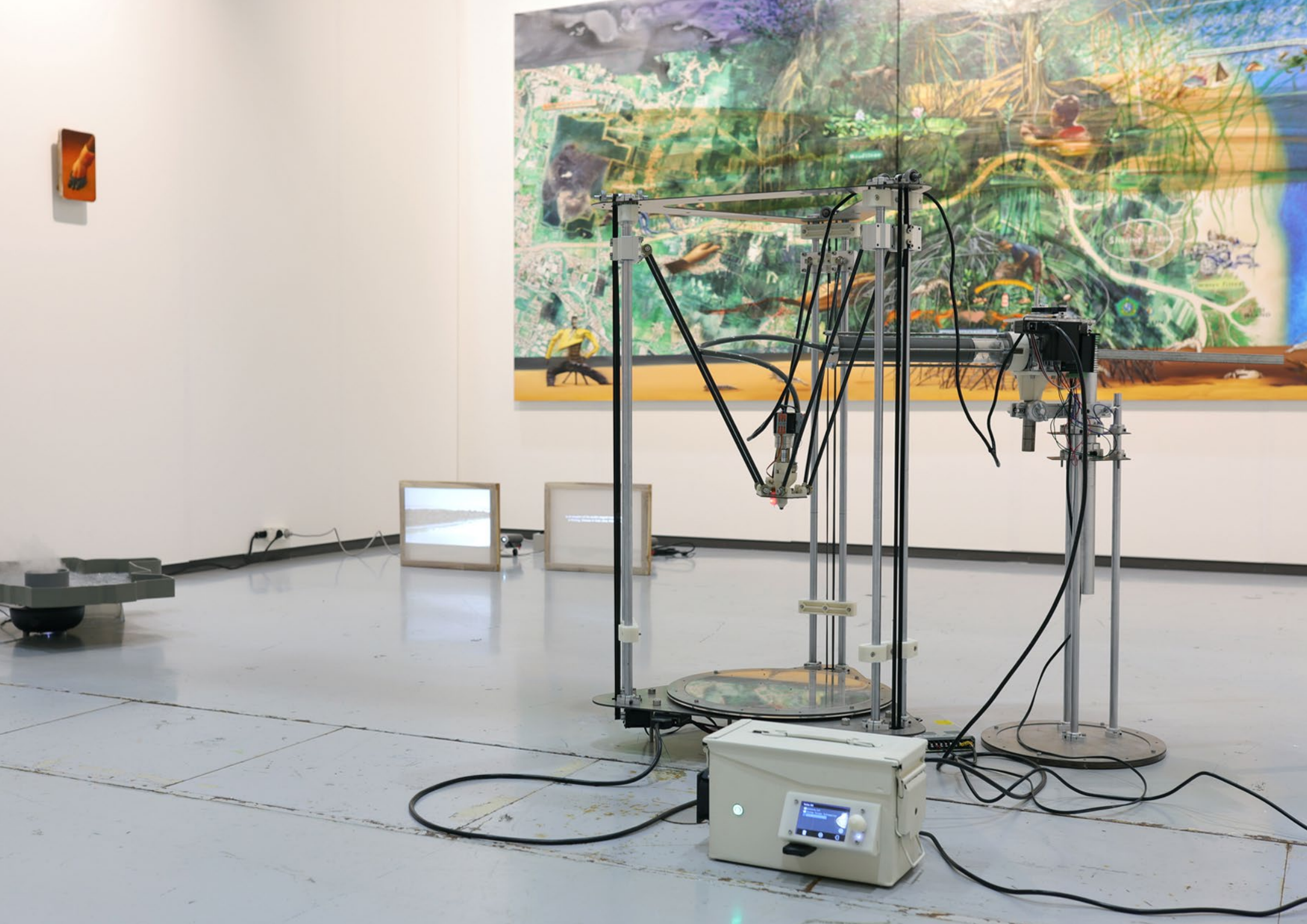
In conversation, Pandega has developed *Cycle* (2022), a complex DIY 3D-printing machine that utilizes mud samples taken directly from Lusi Isle as a medium and prints sculptures throughout the duration of the presentation in a constant cycle based on the mud. *Cycle* prints architectural structures constantly based on a decrepit house Pandega came across as he visited Lusi. Every day, *Cycle* will be constructing the mud house repeatedly, then destroyed repeatedly, in a continuous manner.

## ROH

In addition to the constantly house-building 3D-printed machine, Pandega will also show *Grey Pool (2022)*, a sculptural visualization of the mud spillage. An aerial mapping of the affected area made out of Plexiglass is attached to a mist machine representing the continuity of the mud spillage today.

In both the works of Imazu and Pandega, destruction and regeneration are not binary concepts that interject upon each other, but instead form necessary conditions by which the other exists. The emphasis on the project, therefore, is not so much as critique towards manmade disasters or the anthropocene, but rather in relation to our capacity to be resilient and adaptive to the ever-changing.







KEI IMAZU



*When Facing the Mud (Response of Shrimp Farmers in Sidoarjo)*  
2022  
Oil, acrylic, mud, UV print on linen  
388 × 194 cm

*When Facing the Mud*  
2022  
2 channel FHD, silkscreen on wooden frame  
11 min 57 sec

WAGIWAGI

HOW HO  
ANCHI LIN  
HSIN-CHIEH HUNG  
KAY HUNG AND ORBIT LIN  
TFRI SHU-HUI WU AND TZU-FEN LIN  
CHIH-HUA HUANG  
YI-PIN HUANG  
BAGUS PANDEGA AND KEI IMAZU  
CELYN BRICKER  
ALIANSYAH CANIAGO  
SHARO LIANG  
KE-TING CHEN  
WEI-CHIEH HUANG

18 JUNE – 25 SEPTEMBER 2022

DOCUMENTA FIFTEEN  
HÜBNER AREAL  
AGATOFSTRASSE 15  
KASSEL, GERMANY

PHOTO COURTESY OF THE ARTISTS AND DOCUMENTA  
FIFTEEN

“WAGIWAGI” attempts to explore the island ecosystem from a non-human-centered perspective, including the creation of multiple groups of artists responding to natural environment issues such as sunlight, plants and land, as well as the basic system design in the architectural space. Through the dialectical thinking of the system “resource-commoner-institution”, and “island” may be an alternative field created in the process of identification, exploration, establishment, resistance, running-in and negotiation, pointing to A certain life practice of “living together” in stages also includes reflection on various reasons for “not being able to live together”.

In *Speculative Ecologies: Plotting Through the Mesh*, hypertext and multi-centrism are given priority ; multiple groups of authors point out that hypertext does not obscure the fact that it is a medium, its structure and effects on receivers are contrary to a linear perspective. As well as the scientific paradigms of the past establishing the human knowledge base, multi-centrism is a natural and generous way of constructing environmental ethics. (p.18-19).

However, after the 20th century, the Internet has brought about the drastic speed of change in modern society, making hypertext and multi-centricism challenging the only center and peripheral changes in the existing class system, reflecting the urban development, ecological evolution, landscape in which we live. In culture, the design of survival strategies and institutional changes reflect that the future field is unknown and changeable, more drastic than traditional agricultural society.

When we realize that concentric circleism leads to competition, advantage, invasion and succession in the ecological process, it is also manifested in the development of cities in various countries. In order to reduce the center distance and marginalization of physical space, multi-coreism has evolved along with decentralization. The democratization of and declassification seems to create fluidity and diversity within this range. In cross-cultural and interdisciplinary discussions, islands carry the collective interweaving of paradigms, ideas, emotions, labor, language, civilization, etc. We step into the tropics to discuss the problems and challenges faced by rainforests, practical exchanges bring people together in an innovative environment, reface the environmental problems we are in, and then solve short, medium and long-term problems and dialogues.

Borrowing from JB Jackson ‘s research on cultural landscape, cultural landscape is not static, but a constantly changing relationship between human and land. Landscape has two functions simultaneously in social life: on the one hand, it is a place created by human beings and the result of joint labor, but on the other hand, it structures the way we see things and operates on an ideological level. In addition to original ecological records, research and creation of ecological issues, team interaction and workshops, what is more important is to observe the interactive process of reconnecting with the land after returning to nature, and then using this experience to construct a new the environmental art practice model interprets the cross-border ecological relationship and the vision of the fate of people and species, and promotes academic and cultural exchanges and alternative narratives without borders.

Therefore, it brings out the scope of observation of the art project of “WAGIWAGI”, and the sunlight, plants and land in the natural ecology are used as the text. In the geographical Austronesian Siraya and Atayal languages, “Wagi” represents the sun; Wagiwagi means greeting to

## ROH

nature, and also What a great idea! The Chinese translation “Wa” represents the tile, which carries the media of the boundary between nature and human; the former “Gi” means collective and collaborative; the latter “Gi” echoes the identity and belonging of all things.

The natural environment inspires us to explore the interpretation of the living field, to find the face and meaning of this island land. Irish poet Seamus Heaney once said, “To know who you are, you have to have a place to come from”. We have lots of local feelings, but we must first recognize where we come from – human perspective, or non-human center dimension, what is the positive role of ecology in this field? How to carry out civic open governance? How far will science lead us? This will be the challenging journey full of uncertainty. With the development of society and economy and the rise of cities, consumption activities in densely populated areas have led to alienation and unfamiliarity with nature. How can we care for ecology from urban living?

Today, we choose to get close to nature, re-understand the history and the present of the land, and explore spatial scenes and regional emotions through the reconnection of people and the environment; reading the topographical writings written by writers, once again opening a different dimension of life vision. The contemporary interpretation of the ancient’s “harmony between man and nature” adds some imaginary space to the contemporary ethical concept of harmonious coexistence between man and nature. When greenery enters the house, integrates into the daily life and serves as a bridge for sustainable life, how can we use our existing life experience to re-understand the people and land in our hometown, and look back at the current nature and human life texture from the future.

SUAVEART from Taiwan and Jatiwangi Art Factory from Indonesia built a space of about 300 square meters in Majalengka, West Java, which serve as a cultural exchange center between Taiwan and Indonesia, providing the dynamic platform for cultural researchers and global citizen. Combined with Taiwanese architect design, the construction method is taken from the local with bamboo, wood and brick as the main materials. It is closely connected with the local cultural community while responding to the current low-carbon emissions. The construction process is unveiled simultaneously in Indonesia and at documenta fifteen Kassel, Germany in 2022.

ROH

BAGUS PANDEGA AND KEI IMAZU

*The Fertile Land*  
2022  
Fabric collage, acrylic on canvas  
160×300cm



DECLARING DISTANCE  
BANDUNG – LEIDEN

ARNOUD ARPS  
ATEP KURNIA  
AUDYA AMALIA  
AULIA IBRAHIM YERU  
BAGUS PANDEGA AND KEI IMAZU  
ESTHER CAPTAIN  
ERNST KAREL AND VERONIKA KUSUMARYATI  
FAJAR ABADI (GELANGGANG OLAH RASA)  
FAUZIE WIRIADISASTRA  
HAMMAD ZAHID MUHARRAM  
IGNATIUS BAMBANG SUGIHARTO  
MARIEKE BLOEMBERGEN  
RIAR RIZALDI  
RIDWAN HUTAGALUNG  
RITA VICTORIA SIMANJUNTAK  
RIZKI LAZUARDI  
SADIAH BOONSTRA  
SUNDEA  
TEGUH PERMANA  
THEIO FRIDS HUTABARAT  
TRI JOKO HER RIADI  
YOSEFA AULIA  
ZALDY ARMANSYAH  
ZICO ALBAIQUNI

8 APRIL – 29 MAY 2022

BALE TONGGOH  
SELASAR SUNARYO ART SPACE  
BANDUNG, INDONESIA

PHOTOS COURTESY OF THE ARTISTS AND SELASAR  
SUNARYO ART SPACE

BAGUS PANDEGA AND KEI IMAZU

*Artificial Green by Nature Green 3.0*

2022

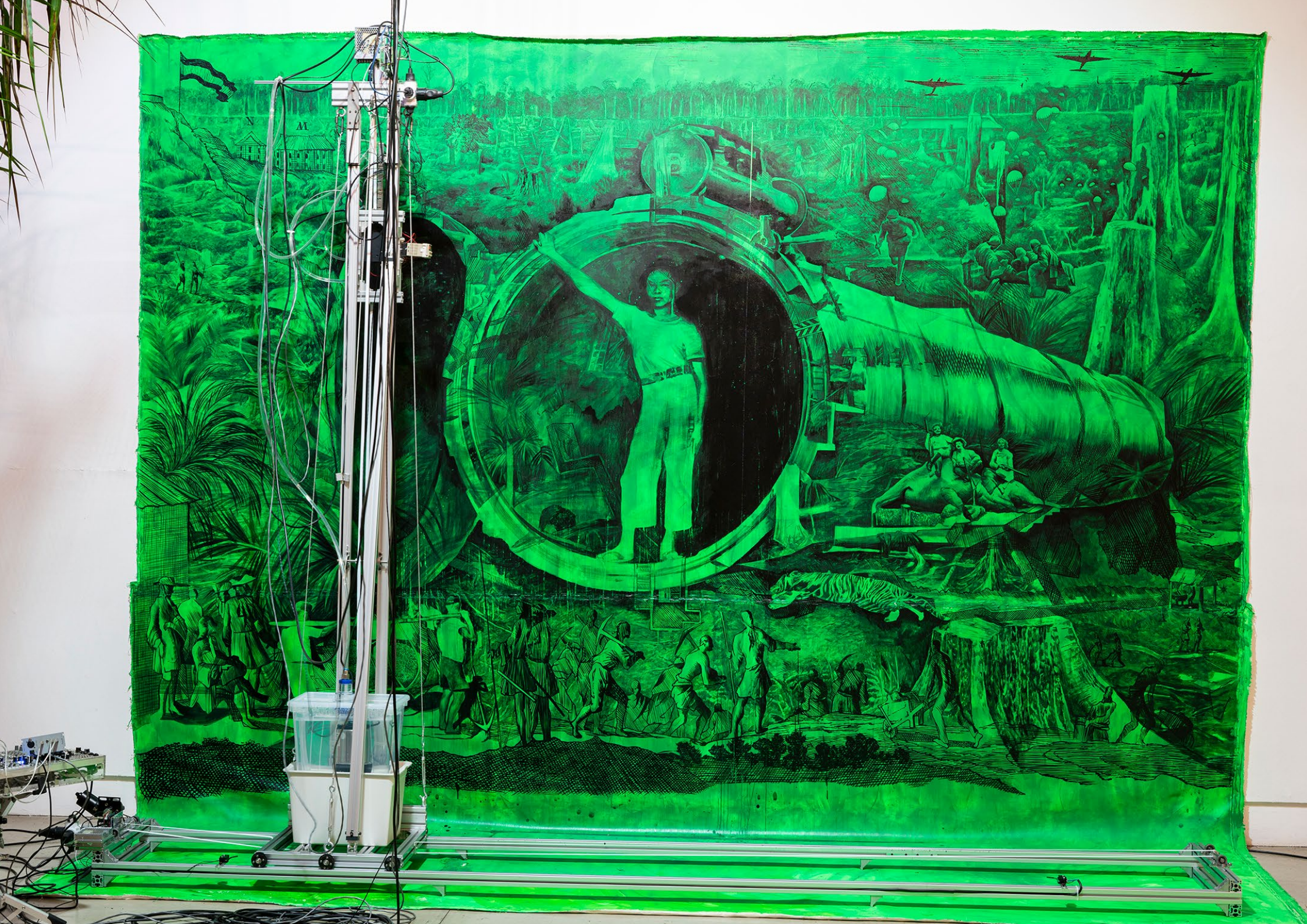
Painting and machine installation, water-based  
paint and Cyanobacteria on canvas, modular

synthesizer, oil palm

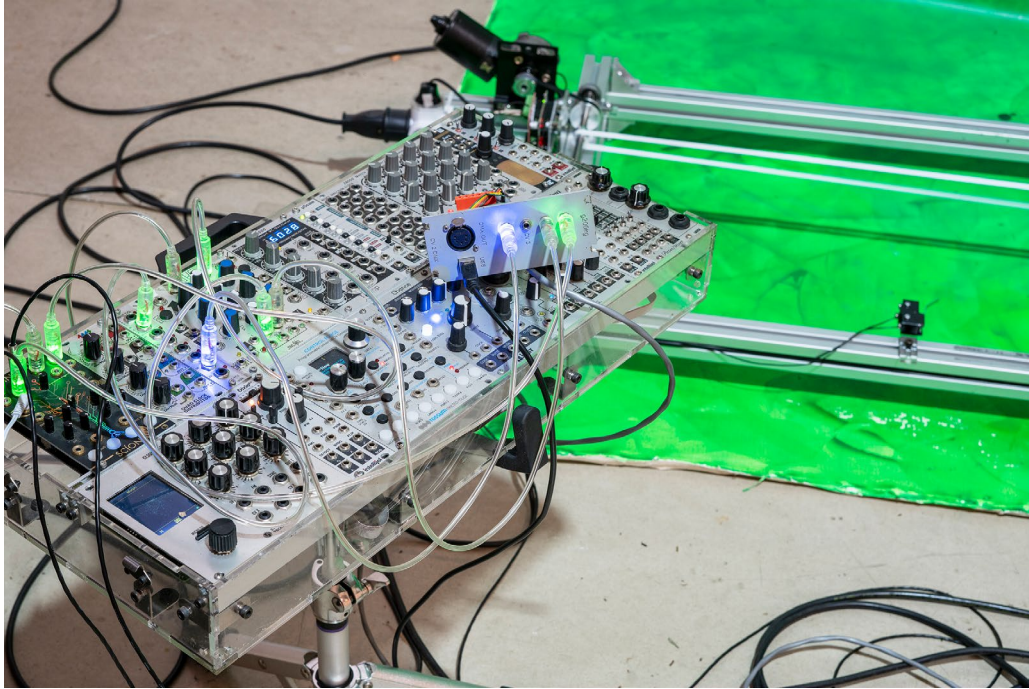
Variable dimension







ROH







WE PAINT!

FARAH ATASSI  
JANIS AVOTINS  
ZANDER BLOM  
CHLOË SAÏ BREIL-DUPONT  
GUILLAUME BRESSON  
SOL CALERO  
NICOLAS CHARDON  
MATHIEU CHERKIT  
JEAN CLARACQ  
PHILIPPE DECRAUZAT  
STELIOS FAITAKIS  
JONATHAN GARDNER  
MIRYAM HADDAD  
KEI IMAZU  
FLORIAN KREWER  
ALEXANDRE LENOIR  
TURIYA MAGADLELA  
MAUDE MARIS  
LANDON METZ  
ANNE NEUKAMP  
GAVIN PERRY  
TOYIN OJIH ODUTOLA  
LI QING  
RAPHAËLLE RICOL  
NICOLAS ROGGY  
MATT SAUNDERS  
PIERRE SEINTURIER  
AVERY SINGER  
PATRICIA TREIB  
SOIL THORNTON  
LESLEY VANCE  
REZI VAN LANKVELD  
MARINE WALLON

24 MARCH – 24 APRIL 2022

PALAIS DE BEAUX-ARTS  
14 RUE BONAPARTE  
75006 PARIS, FRANCE

PHOTOS BY ROMAIN DARNAUD  
COURTESY OF BREDIN PRAT FOUNDATION



MDCCCLXIII - MDCCCLXIV

RUBENS

VELASQUEZ

RUYSDAAL

MURILLO

VAN-DYCK

INCEPTION A LUT  
PHILIPUS PERGRAT MO...

CONJECTURE

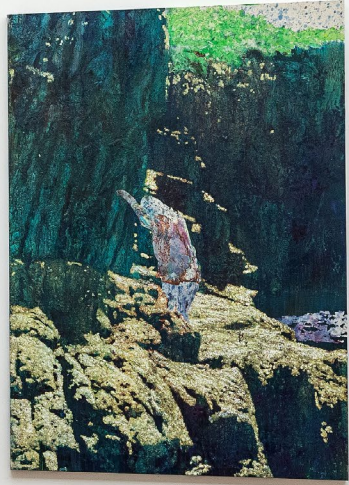
BEA...



LUCADELLAROBBIACORRECE



Heidi Metz  
Dopo il 2011  
L'arte di Heidi Metz è un'indagine sulla memoria e sulla percezione del tempo. Attraverso l'uso di materiali eterogenei e tecniche miste, l'artista crea opere che evocano atmosfere e stati d'animo. In questo lavoro, l'artista esplora il rapporto tra il presente e il passato, utilizzando immagini e simboli che si riferiscono a eventi storici e culturali. L'opera è una riflessione sulla resilienza e sulla capacità di superare le avversità.



ROH

KEI IMAZU

*Last Universal Common Ancestor*  
2022  
Oil on linen  
200 × 135 × 5 cm





ART JAKARTA GARDENS

ADITYA NOVALI  
ARIN DWIHARTANTO SUNARYO  
FAISAL HABIBI  
KEI IMAZU  
SYAIFUL AULIA GARIBALDI  
TROMARAMA  
UJI "HAHAN" HANDOKO

7 - 14 APRIL 2022

ROH  
HUTAN KOTA BY PLATARAN  
JAKARTA, INDONESIA

PHOTOS COURTESY OF THE ARTISTS AND ROH



B6  
ROH  
2009/10



ROH

KEI IMAZU

*Hunter (Gray)*  
2022  
Oil on canvas  
100 × 80 cm



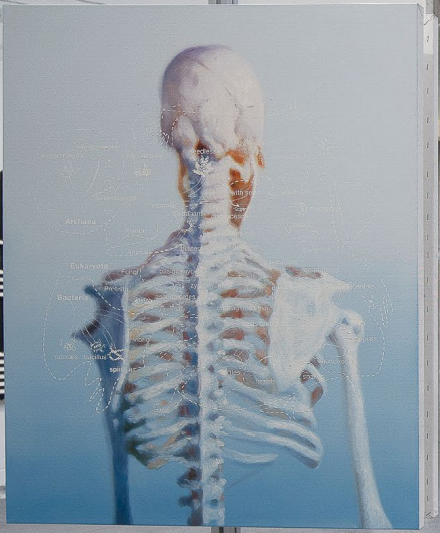
ADITYA NOVALI  
ARIN DWIHARTANTO SUNARYO  
BAGUS PANDEGA  
DAVY LINGGAR  
FAISAL HABIBI  
KEI IMAZU  
LUQI LUKMAN  
MARUTO  
MEI HOMMA  
MELLA JAARSMA  
NADIRA JULIA  
NADYA JIWA  
SYAGINI RATNA WULAN  
SYAIFUL AULIA GARIBALDI  
TROMARAMA  
UJI "HAHAN" HANDOKO

31 MARCH – 21 MAY 2022

ROH  
JALAN SURABAYA 66  
JAKARTA, INDONESIA

PHOTOS COURTESY OF THE ARTISTS AND ROH





ROH

KEI IMAZU

*Endosymbiosis*  
2022  
Oil on linen  
200 × 300 cm





ROH

KEI IMAZU

*Ambone Mermaid*  
2022  
Oil on canvas  
100 × 80 cm



ROH

KEI IMAZU

*The Cosmos on Your Back*  
2022  
Oil on canvas  
100 × 80 cm





ROH

KEI IMAZU

*Hunter (Yellow)*  
2022  
Oil on canvas  
100 × 80 cm



MAPPING THE LAND/BODY/STORIES OF ITS PAST

2 OCTOBER – 7 NOVEMBER 2021

ANOMALY

1 CHOME-33-10 TERRADA ART COMPLEX | 4F  
SHINAGAWA CITY  
TOKYO, JAPAN

PHOTOS BY KEIZO KIOKU

COURTESY OF THE ARTIST AND ANOMALY













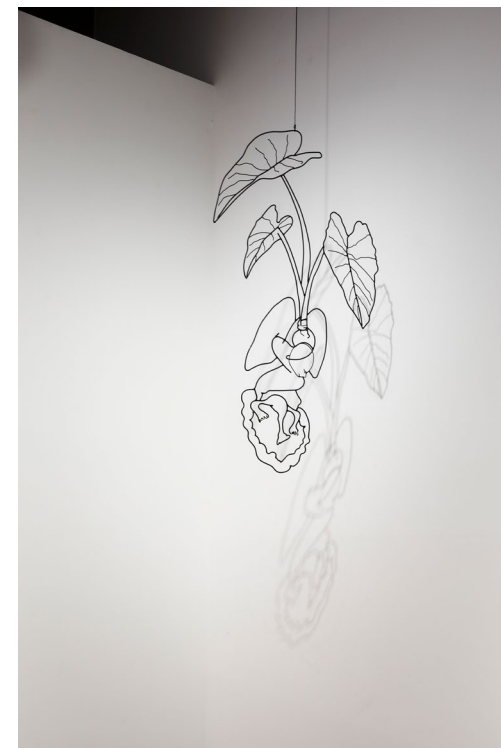
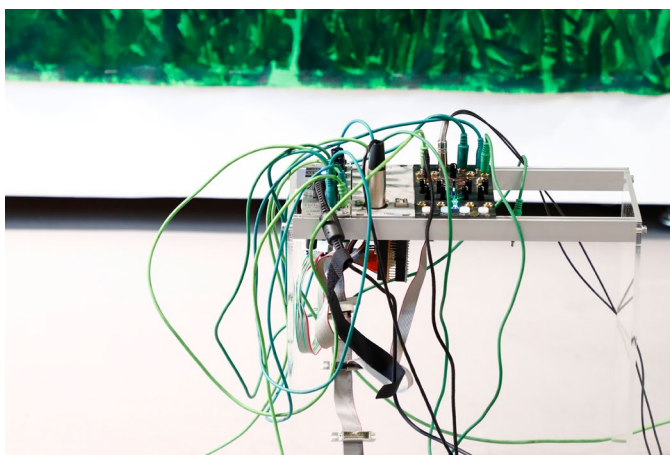
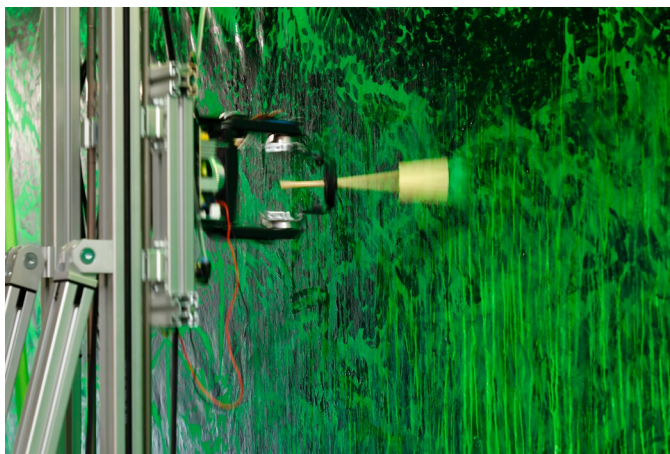
ROH







ROH



LAST WORDS

ATIT SORNSONGKRAM  
CONDRO PRIYOAJI  
DAVY LINGGAR  
GARY-ROSS PASTRANA  
JED GREGORIO  
KEI IMAZU  
LESLEY-ANNE CAO  
MARUTO  
PRAE PUPITYASTAPORN  
TANATCHAI BANDASAK  
TROMARAMA

20 NOVEMBER – 4 FEBRUARY 2022

ROH  
JALAN SURABAYA 66  
JAKARTA 10310

PHOTOS BY DAVY LINGGAR  
COURTESY OF THE ARTISTS AND ROH







ROH

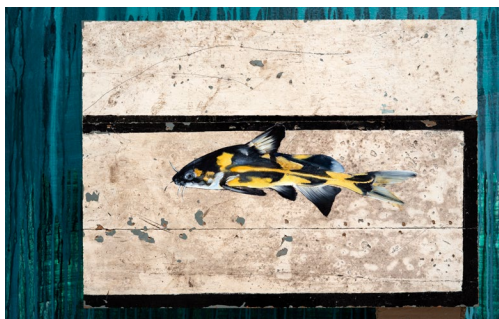
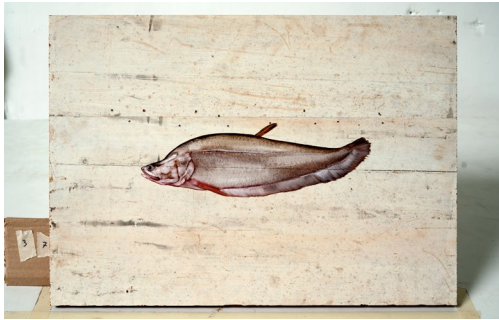
KEI IMAZU

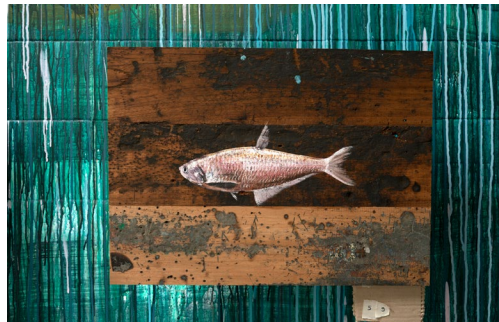
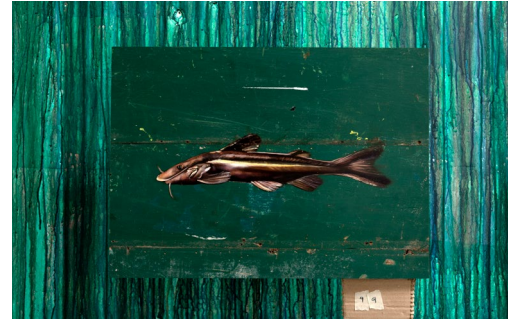
*Lost Fish*  
2021  
Reused wooden materials, oil paint  
Set of 69 panels  
40 × 55 cm each













WE ARE HERE

ANDREA BOWERS  
CATHERINE WAGNER  
CLAUDIE WIESER  
DASHIELL MANLEY  
DAVINA SEMO  
GLEN DALYS MEDINA  
HAYAL POZANTI  
HUGH SCOTT-DOUGLAS  
ISAAC JULIEN  
JOHN HOUCK  
JULIAN HOEBER  
KEI IMAZU  
LAM TUNG-PANG  
LUKE BUTLER  
MARGO WOLOWIEC  
MARTHA FRIEDMAN  
MATT LIPPS  
MATTHEW ANGELO HARRISON  
NICOLE WERMERS  
RASHAAD NEWSOME  
ROSE B. SIMPSON  
WOODY DE OTHELLO

28 MAY – 2 JULY 2022

JESSICA SILVERMAN  
621 GRANT AVE  
SAN FRANCISCO, CA, US

PHOTOS BY JOHN WILSON WHITE  
COURTESY OF JESSICA SILVERMAN GALLERY







ROH

KEI IMAZU

*Circadian Rhythm*  
2020  
Oil on linen  
100 × 100 cm



ROH

KEI IMAZU

*Pelvis*  
2020  
Oil on linen  
100 × 140 cm



ROH

KEI IMAZU

*Red Lines*  
2021  
Oil on linen  
200 × 135 × 4 cm



TIGER ORCHID  
ART BASEL OVR: MIAMI

BAGUS PANDEGA  
KEI IMAZU

2 - 6 DECEMBER 2020

ONLINE

PHOTOS COURTESY OF THE ARTISTS AND ROH







ROH

KEI IMAZU

*Amorphous Mother*  
2020  
Oil on canvas  
130.3 × 194 × 4 cm

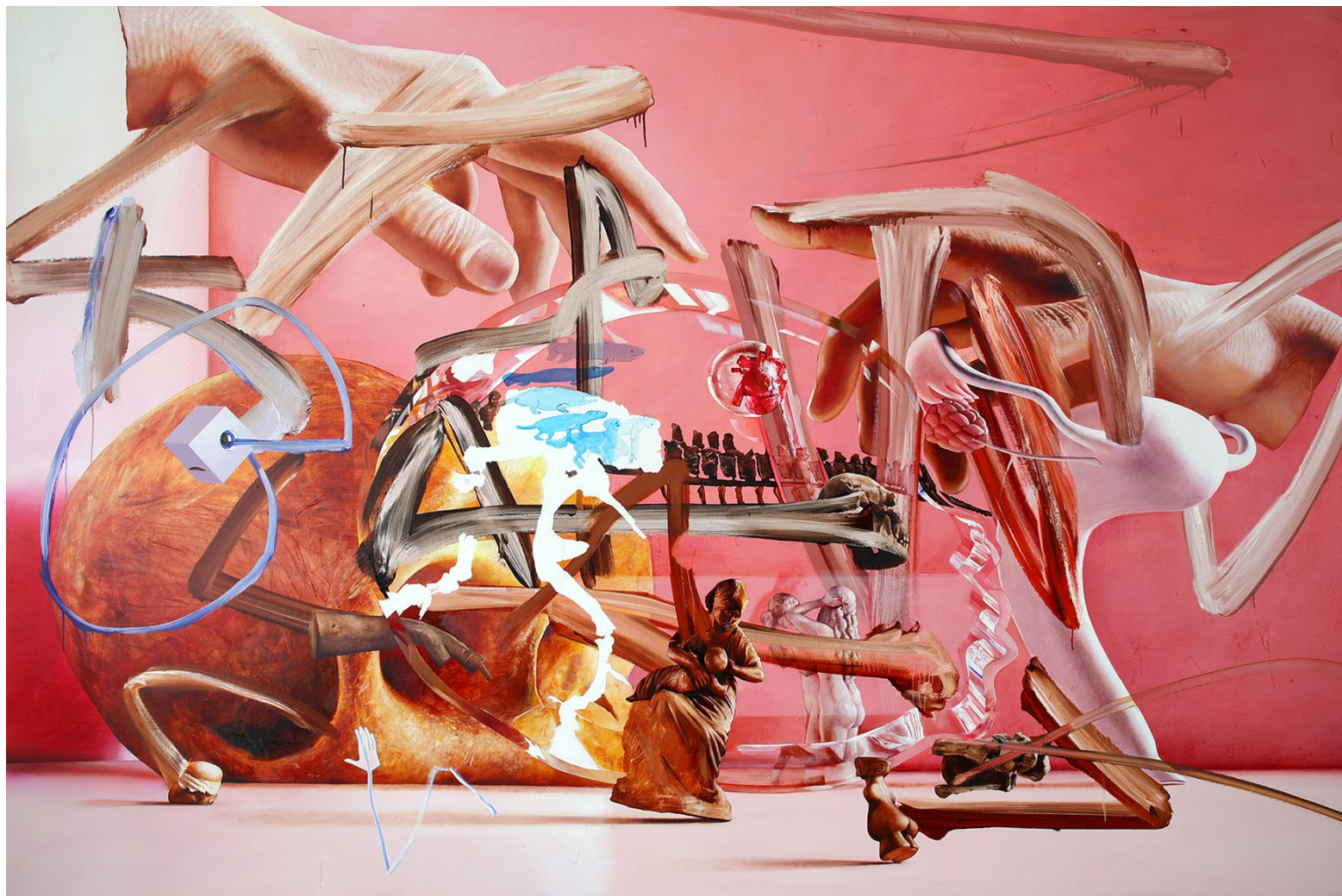




ROH

KEI IMAZU

*Pink Ocean*  
2020  
Oil on canvas  
200 × 300 × 5 cm

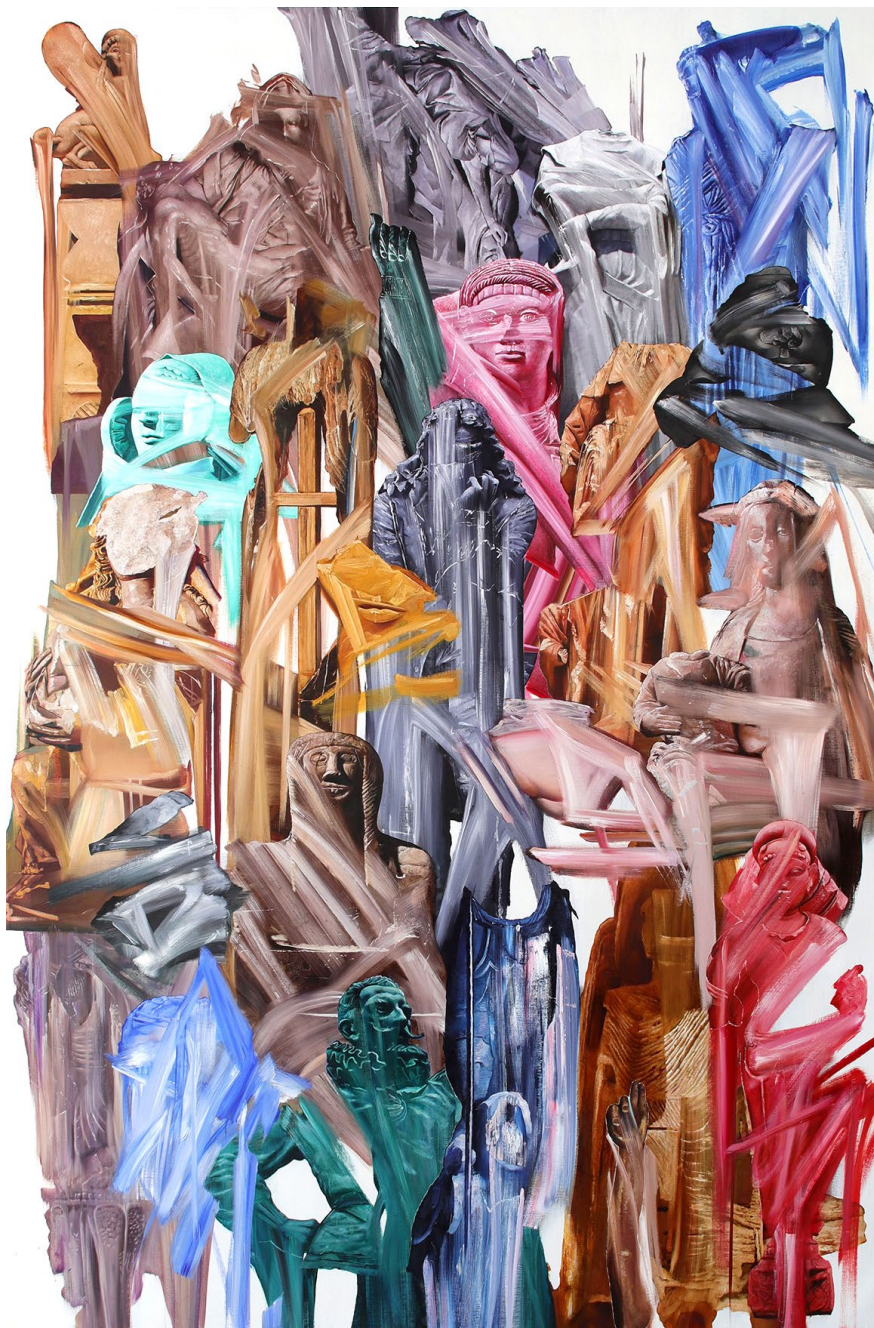




ROH

KEI IMAZU

*Statues*  
2020  
Oil on canvas  
300 × 200 × 5 cm  
(KI 0031)



ART JAKARTA VIRTUAL

ADITYA NOVALI  
ARIN DWIHARTANTO SUNARYO  
BAGUS PANDEGA  
DAVY LINGGAR  
FAISAL HABIBI  
KEI IMAZU  
LUQI LUKMAN  
MARUTO  
MELLA JAARSMA  
NADIRA JULIA  
NADYA JIWA  
SYAGINI RATNA WULAN  
SYAIFUL AULIA GARIBALDI  
UJI "HAHAN" HANDOKO  
WIMO AMBALA BAYANG

15 OCTOBER 2020 – 15 FEBRUARY 2021

ROH  
ONLINE



ROH

KEI IMAZU

*Kopiologi*  
2020  
Oil on canvas  
194 × 194 × 4 cm





ART BASEL ONLINE VIEWING ROOM

ADITYA NOVALI  
ARIN DWIHARTANTO SUNARYO  
BAGUS PANDEGA  
FAISAL HABIBI  
KEI IMAZU  
SYAGINI RATNA WULAN  
SYAIFUL AULIA GARIBALDI  
UJI "HAHAN" HANDOKO

20 - 25 MARCH 2020

ROH  
ONLINE

ROH

KEI IMAZU

*Arella*  
2020  
Oil on cutting board  
24.5 × 14.8 × 6.9 cm



ROH



ROH

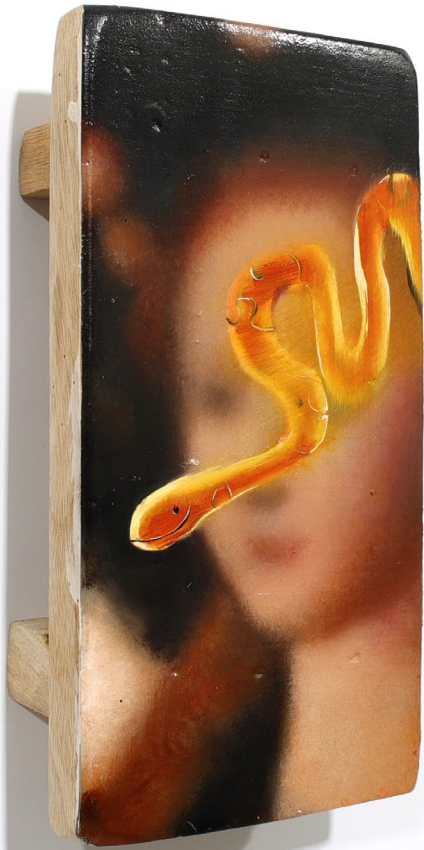
KEI IMAZU

*Smiling Snake*  
2020  
Oil on cutting board  
20 × 10 × 4.3 cm



ROH

KEI IM



WEST BUND ART & DESIGN

ADITYA NOVALI  
ARIN DWIHARTANTO SUNARYO  
BAGUS PANDEGA  
KEI IMAZU  
SYAGINI RATNA WULAN  
SYAIFUL AULIA GARIBALDI

7 - 10 NOVEMBER 2019

WEST BUND ART CENTRE  
SHANGHAI, CHINA

PHOTOS COURTESY OF THE ARTISTS AND ROH





ROH Projects  
N123





ROH

KEI IMAZU

*The Donut of the Heart*  
2019  
Oil on canvas  
190 × 140 cm



ROH

KEI IMAZU

*Tear down the house and build a boat*  
2019  
Oil on canvas  
140 × 190 cm



TAMING Y/OUR PASSION  
AICHI TRIENNALE

1 AUGUST – 14 OCTOBER 2019

AICHI ARTS CENTER  
NAGOYA CITY ART MUSEUM  
NAGOYA CITY (SHIKEMICHI AND ENDOJI)  
TOYOTA  
AICHI, JAPAN

PHOTOS BY TETSUO ITO  
COURTESY OF KEI IMAZU AND ANOMALY



ROH

KEI IMAZU

*SURVIVOR*

Oil on canvas, vinyl banner, led fan light, Komodo  
dragon toy

Painting : 300 × 400 cm

Banner : 1000 × 580 cm



80TH ANNIVERSARY OF THE YOKOHAMA MUSEUM OF ART  
MEET THE COLLECTION

TABAIMO  
YUSUKE ASAI  
KEI IMAZU  
KISHIO SUGA

13 APRIL – 23 JUNE 2019

YOKOHAMA MUSEUM OF ART  
3 CHOME-4-1 MINATOMIRAI, NISHI WARD, YOKOHAMA  
KANAGAWA, JAPAN

PHOTOS BY HARUYUKI SHIRAI  
COURTESY OF YOKOHAMA MUSEUM







KEIDAMAZINI / YOU ARE HERE

KEI IMAZU

16 MARCH – 12 MAY 2019

MUSEUM HAUS KASUYA  
7 CHOME-12-13 HIRASAKU, YOKOSUKA,  
KANAGAWA, JAPAN

PHOTOS COURTESY OF THE ARTIST AND MUSEUM HAUS  
KASUYA





ROH

KEI IMAZU

*Pithecanthropus Erectus*  
2019  
Oil on canvas  
194 × 130.3 cm



ROH

KEI IMAZU

*Flores erectus* and *Leptoptilos robustus*  
2019  
Oil on canvas  
40 × 50 cm



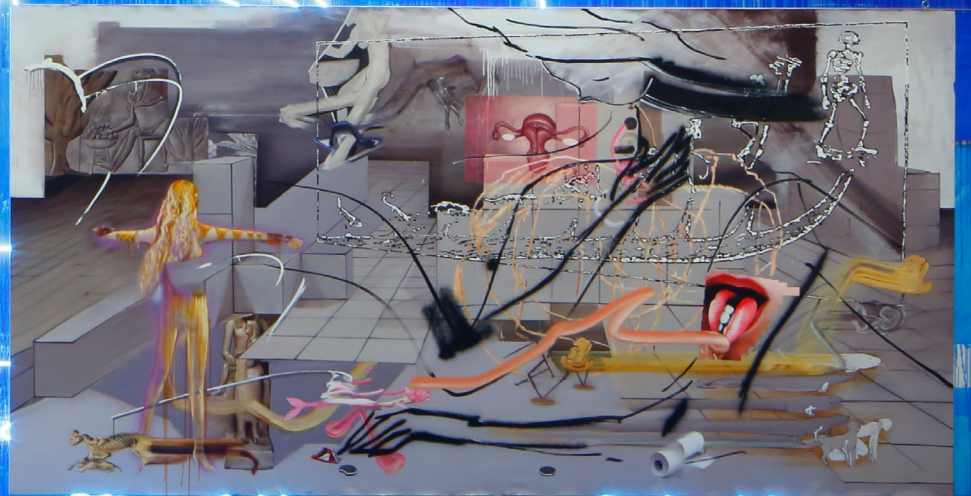
ROPPONGI CROSSING 2019: CONNEXIONS

ANREALAGE  
FUMIAKI AONO  
YOSUKE BANDAI  
ITSUKI DOI + KOHEI OGAWA + TAKASHI IKEGAMI +  
HIROSHI ISHIGURO X JUSTINE EMARD  
DOKUYAMA BONTARO  
KOICHI ENOMOTO  
NOBUHIRO HANAOKA  
CHIHO HAYASHI  
NORIMICHI HIRAKAWA  
HYSLOM  
TAKEHIRO IIKAWA  
KEI IMAZU  
HIROFUMI ISOYA  
YOI KAWAKUBO  
YUKINORI MAEDA  
KAI MAETANI  
MÉ  
MASAHARU SATO  
HIROSHI SUGITO  
NOBUAKI TAKEKAWA  
YUICHIRO TAMURA  
NOBUKO TSUCHIYA  
MICHIKO TSUDA  
HIROKI TSUKUDA  
SHOTA YAMAUCHI

9 FEBRUARY – 26 MAY 2019

MORI ART MUSEUM  
ROPPONGI HILLS MORI TOWER, 6 CHOME-10-1  
ROPPONGI, MINATO CITY,  
TOKYO, JAPAN

PHOTOS BY KIOKU KEIZO  
COURTESY OF THE ARTIST AND MORI ART MUSEUM



ROH

KEI IMAZU

*Long-term Memory*  
2019  
Oil on canvas  
500 × 1200 cm





ROH

KEI IMAZU



KERITIMAKARTA

ADITYA NOVALI  
ATIT SORNSONGKRAM  
AGUS SUWAGE  
ARIN DWIHARTANTO SUNARYO  
BAGUS PANDEGA  
CHOU YU-CHENG  
FAISAL HABIBI  
JUMALDI ALFI  
KEI IMAZU  
LUQI LUKMAN  
MARUTO  
MELLA JAARSMA  
NADIRA JULIA  
MIT JAI INN  
SYAGINI RATNA WULAN  
SYAIFUL AULIA GARIBALDI  
TROMARAMA  
UGO UNTORO  
UJI HANDOKO  
WEDHAR RIYADI  
WIMO AMBALA BAYANG

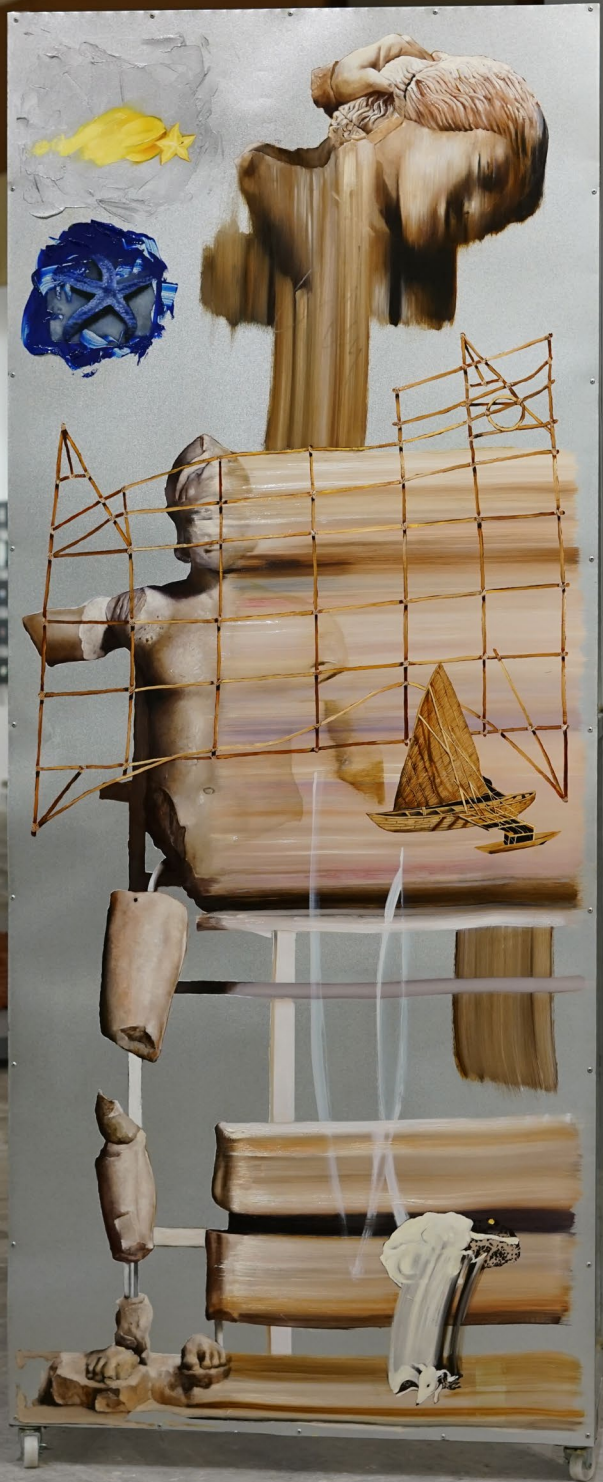
30 AUGUST – 1 SEPTEMBER 2019

ROH  
JAKARTA CONVENTION CENTER  
JAKARTA, INDONESIA

PHOTOS COURTESY OF THE ARTISTS AND ROH



C3  
ROH  
JAKARTA



ROH

KEI IMAZU

*Nautical Chart*  
2019  
Oil on zinc aluminium  
226 × 92 × 60 cm



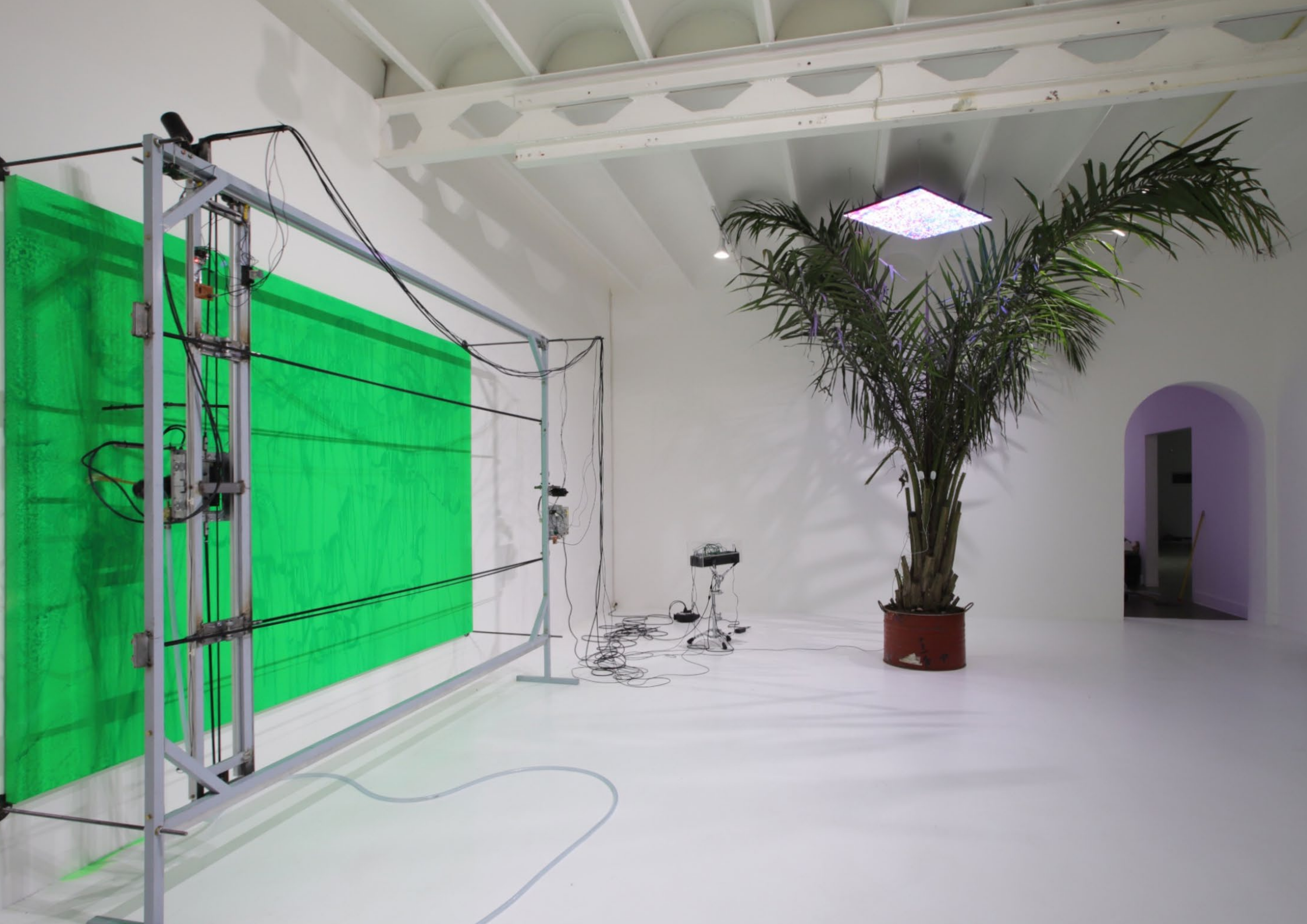
~~KRITISIAL~~ GREEN BY NATURE GREEN  
ARTJOG

BAGUS PANDEGA  
KEI IMAZU

25 JULY – 25 AUGUST 2019

JOGJA NATIONAL MUSEUM  
YOGYAKARTA, INDONESIA

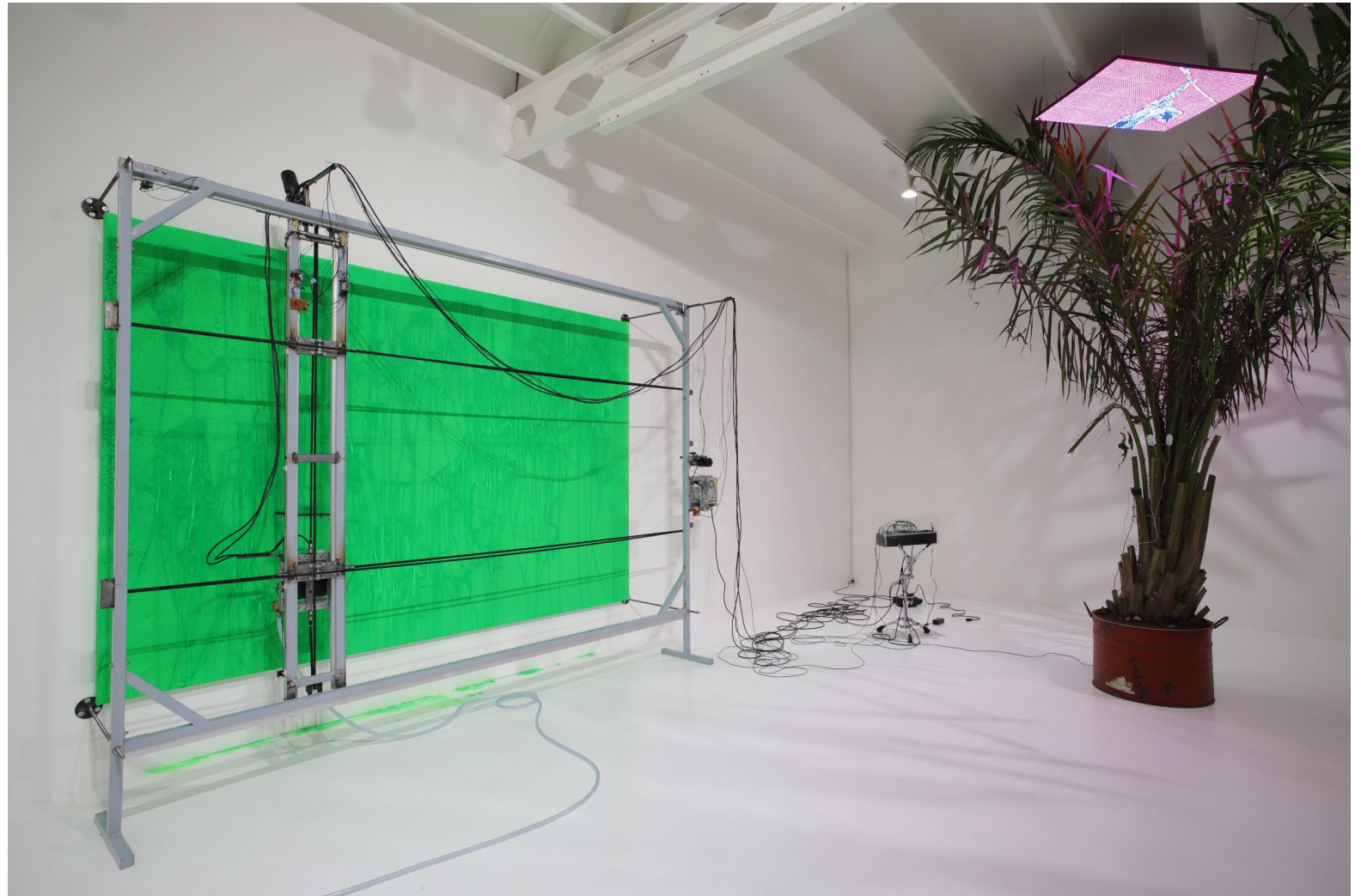
PHOTOS BY KEI IMAZU  
COURTESY OF THE ARTISTS AND ARTJOG



ROH

KEI IMAZU

*Artificial Green by Nature Green*  
2019  
Painting machine, canvas, modular synthesizer,  
palm tree, hologram LED  
Dimension variable

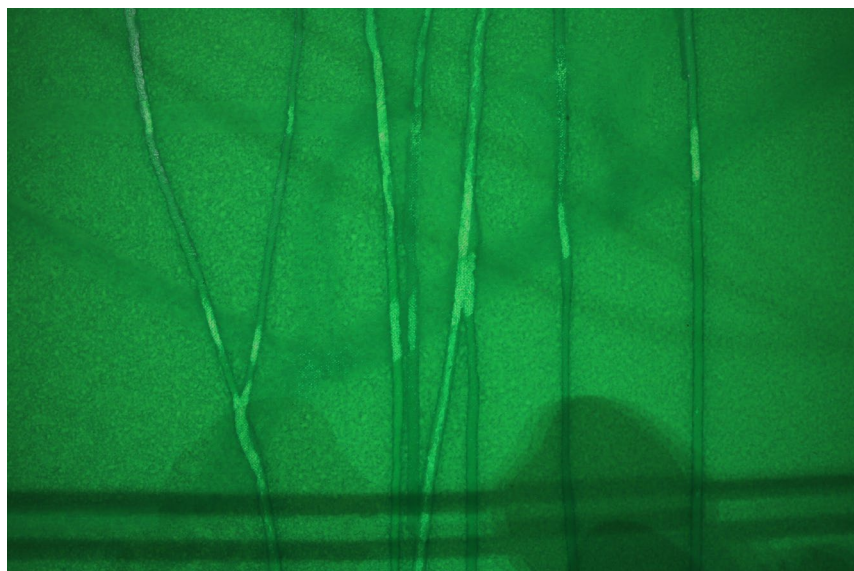




ROH



KEI IMAZU



~~KRITIBAZEL~~ HONG KONG

ADITYA NOVALI  
ARIN DWIHARTANTO SUNARYO  
BAGUS PANDEGA  
FAISAL HABIBI  
KEI IMAZU  
SYAGINI RATNA WULAN  
SYAIFUL AULIA GARIBALDI  
UJI "HAHAN" HANDOKO

24 - 31 MARCH 2019

ROH  
HONG KONG CONVENTION AND EXHIBITION CENTRE  
HONG KONG

ROH

KEI IMAZU

*Starts*  
2019  
Oil on canvas  
40 × 50 cm



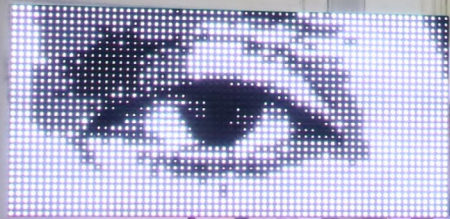
~~KEI IMAZU~~ PARIS INTERNATIONALE

BAGUS PANDEGA  
KEI IMAZU

17 - 21 OCTOBER 2018

ROH  
16 RUE ALFRED DE VIGNY  
PARIS, FRANCE

PHOTOS COURTESY OF THE ARTISTS AND ROH



ROH PRO  
Jaka



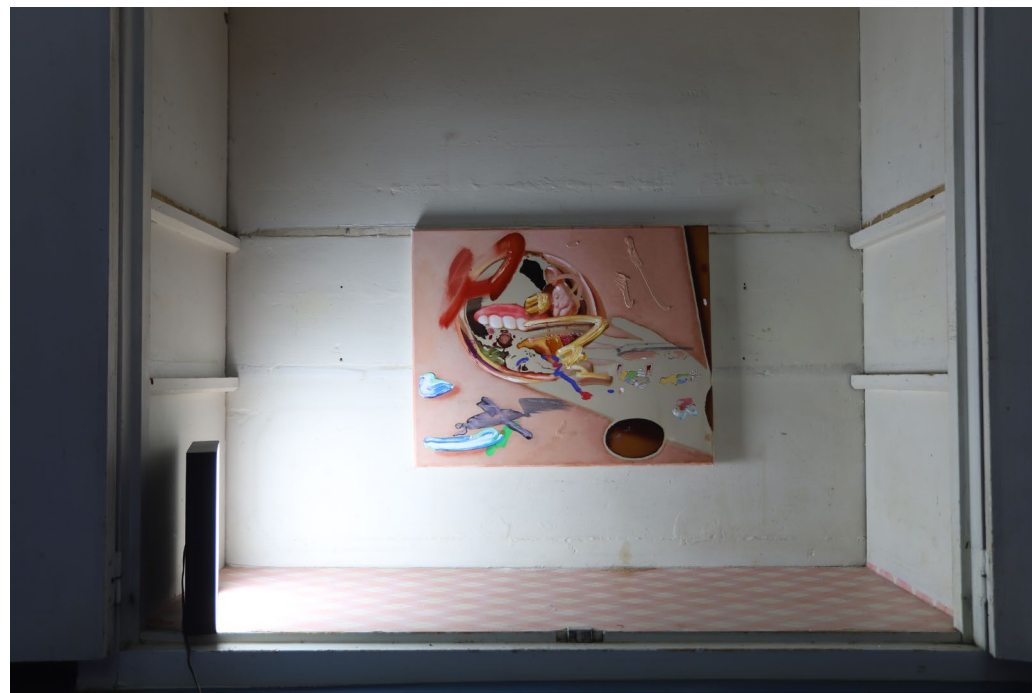
ROH

KEI IMAZU

*Blue fish in my hand*  
2018  
Oil on canvas  
206 × 434 cm



ROH

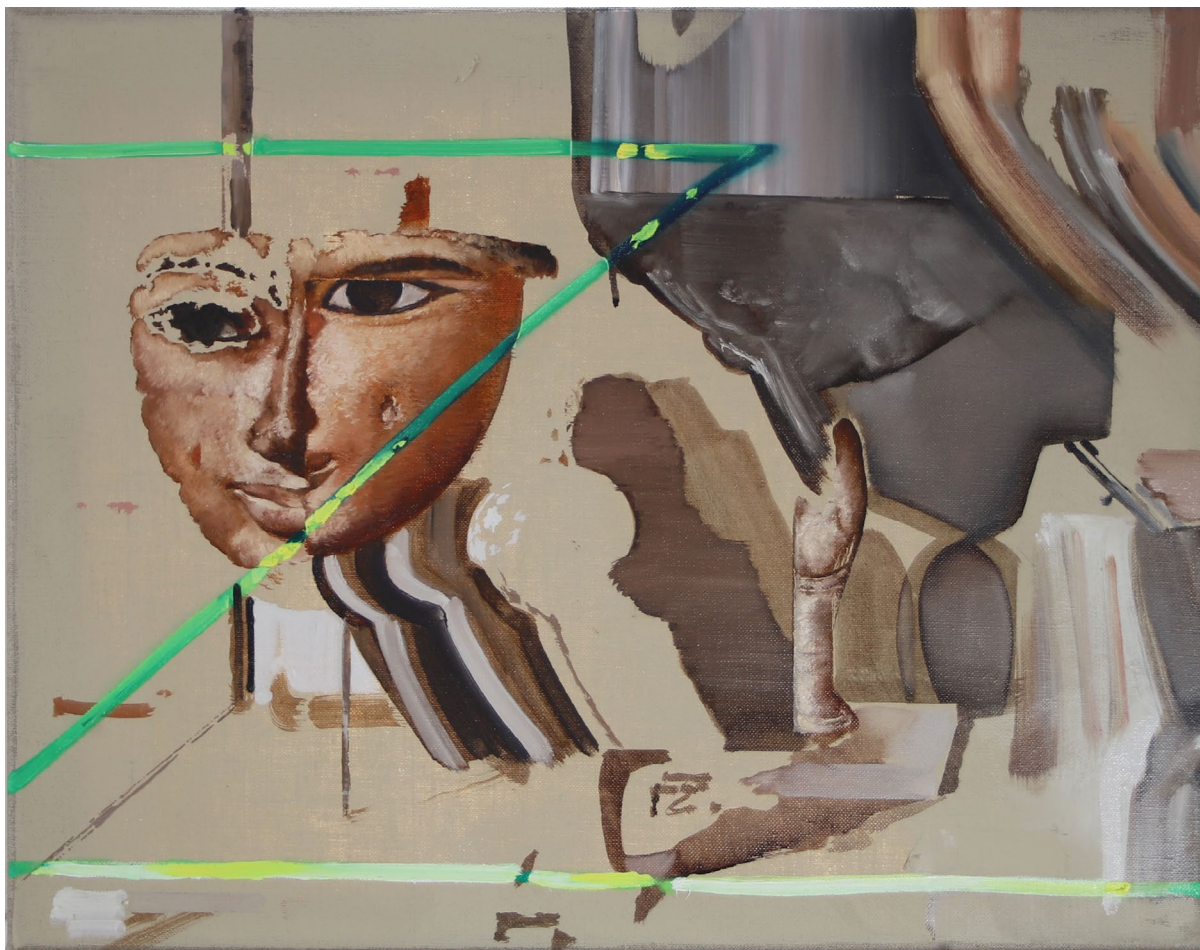




ROH

KEI IMAZU

*Green line*  
2018  
Oil on Canvas  
40 × 50 cm



ROH

KEI IMAZU

*I met a lonely moai*  
2018  
Oil on Canvas  
50 × 70 cm



ROH

KEI IMAZU

*Teeth gummy*  
2018  
Oil on canvas  
40 × 50 cm



ROH

KEI IMAZU

*Venus in my hand*  
2018  
Oil on canvas  
70 × 50 cm



MEASURING INVISIBLE DISTANCE

KEI IMAZU

9 JUNE – 14 JULY 2018

YAMAMOTO GENDAI  
3F TERRADA ART COMPLEX, 1-33-10, SHINAGAWA-KU,  
TOKYO, JAPAN

PHOTOS COURTESY OF THE ARTIST AND YAMAMOTO  
GENDAI





ROH





~~OVERGROWN~~

KEI IMAZU

3 - 24 AUGUST 2017

ROH PROJECTS  
EQUITY TOWER 40E  
JAKARTA, INDONESIA

PHOTOS COURTESY OF THE ARTIST AND ROH PROJECTS





ROH

KEI IMAZU

*Sleep Well*  
2017  
Oil on linen  
220 × 190 cm (framed)



ROH

KEI IMAZU

*Orange Box*  
2016  
Oil, mixed media on wood  
22 × 23 × 5 cm



ROH



ROH

KEI IMAZU

Woo  
2017  
Oil, acrylic on canvas  
210 × 406 cm



ROH

KEI IMAZU

*Monkey Grows Something Under The Tomb*  
2016  
Oil on canvas  
146 × 205 cm





ROH

KEI IMAZU

*Lying Warrior*  
2016  
Oil, mixed media on wood  
19.5 × 41.5 × 1 cm



ROH

KEI IMAZU

*Human Study*  
2017  
Oil, acrylic on canvas  
210 × 406 cm







ROH

KEI IMAZU

*Yellow Room*  
2017  
Oil on canvas  
140 × 230 cm



ROH

KEI IMAZU

*Profile of Woman*  
2016  
Oil, mixed media on wood  
18.5 × 23 × 5.5 cm



ROH



ROH

KEI IMAZU

*Candy in Amber Room*  
2017  
Oil, mixed media on wood  
12.5 × 17 × 2.5 cm





ROH



ROH

KEI IMAZU

*Utan*  
2017  
Oil on canvas  
160 × 150 cm



ROH

KEI IMAZU

*Donuts*  
2016  
Oil, mixed media on wood  
18 × 22 × 4 cm



ROH



ROH

KEI IMAZU

*Hungry Cat*  
2017  
Oil on cotton canvas  
100 × 30 cm



REPARATION

KEI IMAZU

16 - 30 JANUARY 2016

YAMAMOTO GENDAI  
3F TERRADA ART COMPLEX, 1-33-10, SHINAGAWA-KU,  
TOKYO, JAPAN

PHOTOS BY KEIZO KIOKU  
COURTESY OF THE ARTIST AND YAMAMOTO GENDAI







ROH

KEI IMAZU

*Battle Against the Giants*  
2016  
Oil on canvas  
259 × 194 cm



ROH

KEI IMAZU

*Repatriation (white background)*  
2015  
Oil on canvas  
97 × 194 cm



ROH

KEI IM





KEI IMAZU

ADITYA NOVALI  
AGUS SUWAGE  
ARIN DWIHARTANTO SUNARYO  
BAGUS PANDEGA  
CINANTI ASTRIA JOHANSJAH  
ERWIN WINDU PRANATA  
FAISAL HABIBI  
GARY-ROSS PASTRANA  
GENEVIEVE CHUA  
JEREMY SHARMA  
KEI IMAZU  
PATRICIA UNTARIO  
RENDY RAKA PRAMUDYA  
RESTU TAUFIK AKBAR  
RYAN VILLAMAEL  
SONI IRAWAN  
SYAGINI RATNA WULAN  
SYAIFUL AULIA GARIBALDI  
TOSHIYUKI KONISHI  
TROMARAMA  
UJI "HAHAN" HANDOKO  
WEDHAR RIYADI  
WIYOGA MUHARDANTO  
YUKINORI YANAGI

5 – 8 AUGUST 2016

ROH PROJECTS  
ART STAGE JAKARTA  
SHERATON GRAND, GANDARIA CITY  
JAKARTA, INDONESIA

25 – 28 AUGUST 2016

ROH PROJECTS  
BAZAAR ART JAKARTA, PACIFIC PLACE  
JAKARTA, INDONESIA

ROH

KEI IMAZU

*Body Language*  
2016  
Oil on canvas  
194 × 130.3 cm



ROH

KEI IMAZU

*Still Life #2*  
2016  
Oil on canvas  
130.3 × 194 cm



BEOMAZUMAGE

KEI IMAZU

28 FEBRUARY – 28 MARCH 2015

YAMAMOTO GENDAI  
3F TERRADA ART COMPLEX, 1-33-10, SHINAGAWA-KU,  
TOKYO, JAPAN

PHOTOS BY KEIZO KIOKU  
COURTESY OF THE ARTIST AND YAMAMOTO GENDAI



Broken Image

Kei IMAZU





ROH

KEI IMAZU

*Chorus*  
2015  
Oil on canvas  
194 × 130.3 cm



ROH

KEI IMAZU

*Portrait of the Woman*  
2015  
Oil on canvas  
130 × 97 cm



ROH

KEI IMAZU

*Nude Colors*  
2014  
Oil on canvas  
162 × 227.3 cm



KEI IMAZU

JALAN SURABAYA 66  
JAKARTA 10310  
+628118719066

ROHPROJECTS.NET